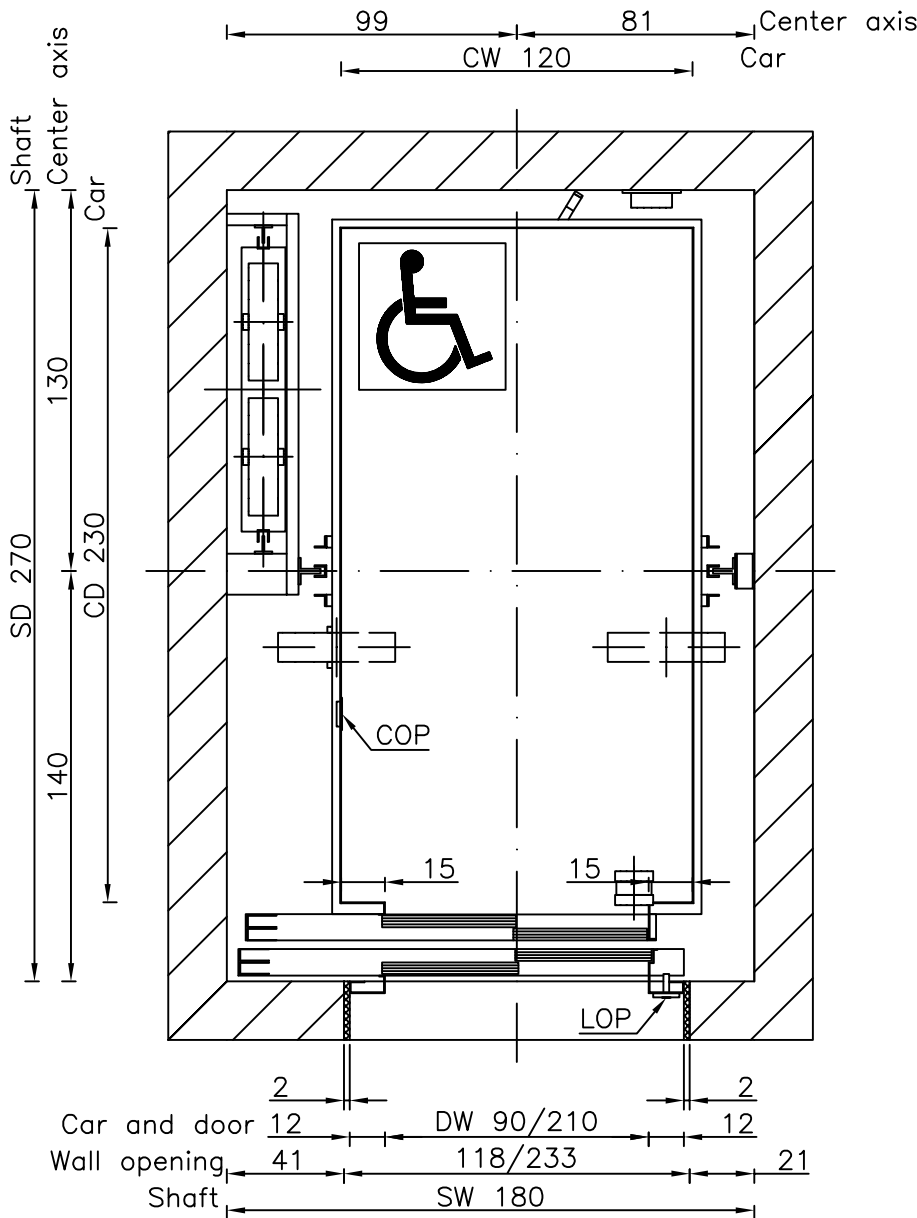
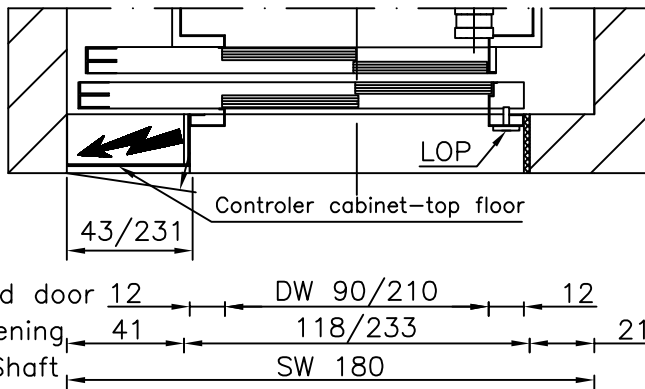
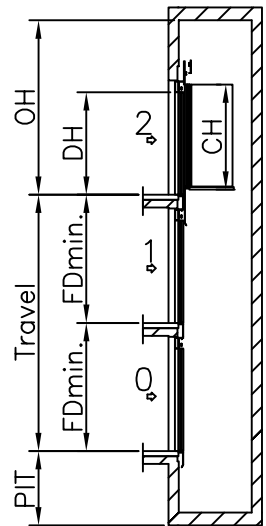
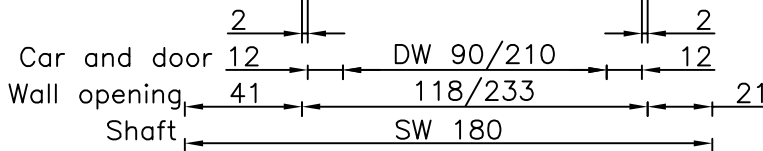


# Well

All dimensions may not exceed perpendicular tolerance of  $\pm 2$  cm



OH = Overhead  
 CW = Car width  
 CD = Car depth  
 CH = Car height  
 DW = Door width  
 DH = Door height  
 FD = Floor distance  
 COP = Car Operating Panel  
 LOP = Landing Operating Panel



Speed: 1 m/s	
PIT: 140 cm	
OH: 380 cm	
CW: 120 cm	DW: 90 cm
CD: 230 cm	DH: 210 cm
CH: 220 cm	
FDmin.: 260 (CH+50 cm)	

TYPICAL POWER REQUIREMENTS	
Motor Power (k.W.)	7,7kW
Running current	30 A
Starting current	40,7A

Type:	GEARLESS MRL 2:1 1275 kg TL9		Drawn By:	Tomi Irgolič	
	ELECTRIC		Date:		
			Revision:	00	Page:
					73

Dimensions in cm.