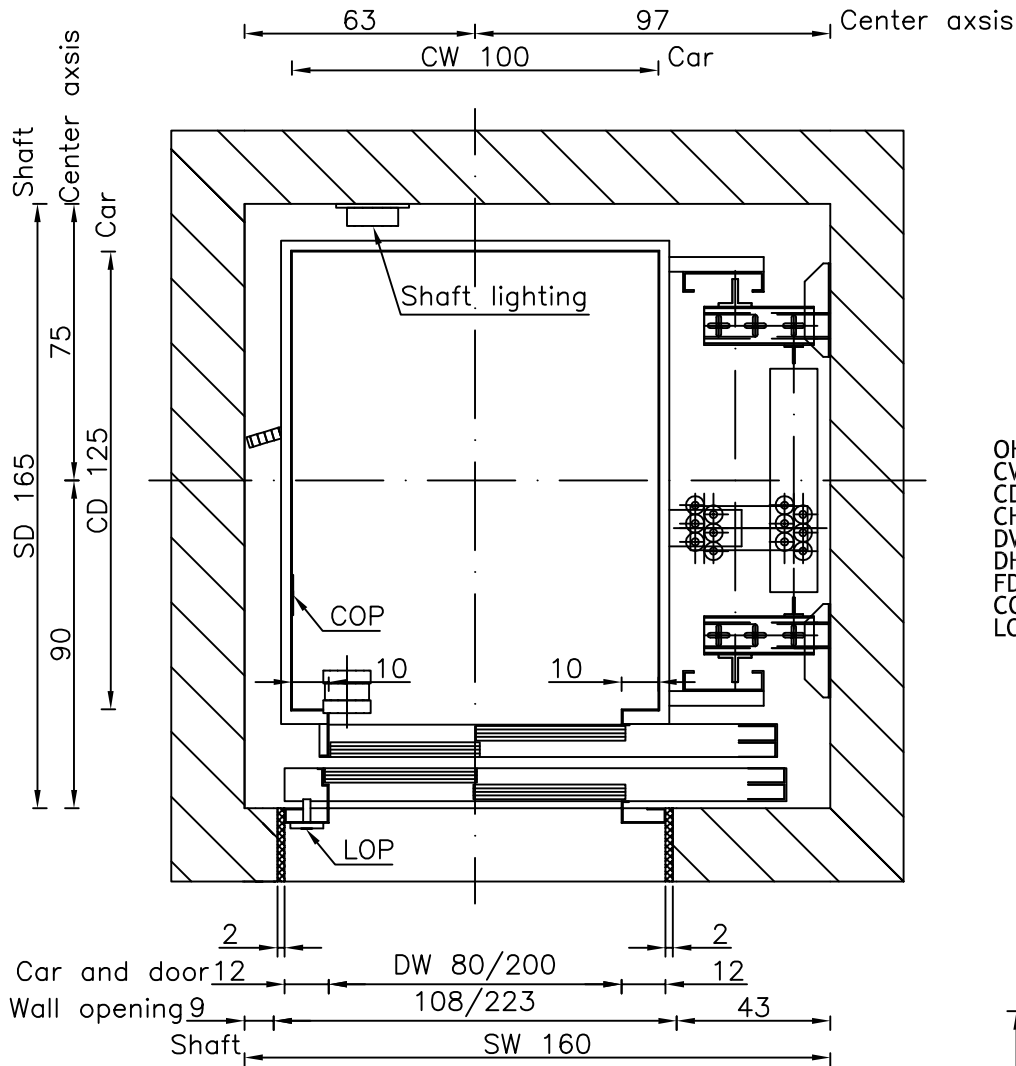
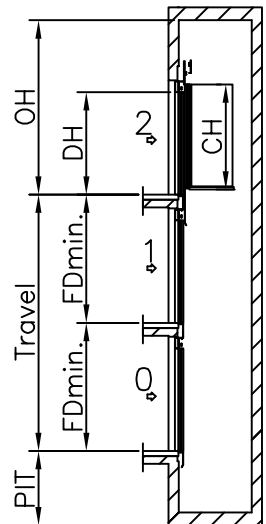
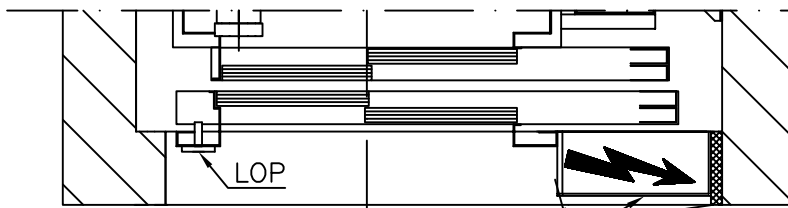
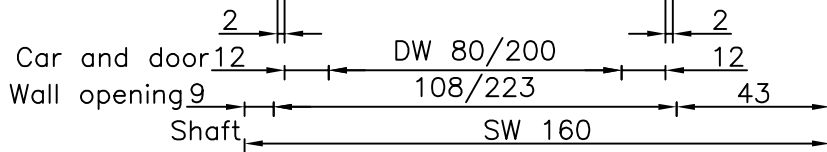


# Well

All dimensions may not exceed perpendicular tolerance of  $\pm 2$  cm



- OH = Overhead
- CW = Car width
- CD = Car depth
- CH = Car height
- DW = Door width
- DH = Door height
- FD = Floor distance
- COP = Car Operating Panel
- LOP = Landing Operating Panel



Speed: 1 m/s	
PIT: 120 cm	
OH: 360 cm	
CW: 100 cm	DW: 80 cm
CD: 125 cm	DH: 200 cm
CH: 210 cm	
FDmin.: 250 (CH+50 cm)	

Dimensions in cm.

TYPICAL POWER REQUIREMENTS	
Motor Power (k.W.)	2,8 kW
Running current	10,8 A
Starting current	16 A
Overload current	20,8 A

Type: Gearless MRL 480 kg TR8

ELECTRIC

A4  
1:20

Drawn By:  
Tomi Irgotič  
Date:  
19.10.2006

Revision: 00

SEC

Page: 24