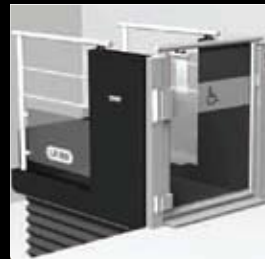
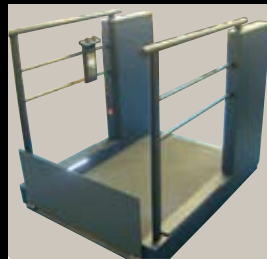
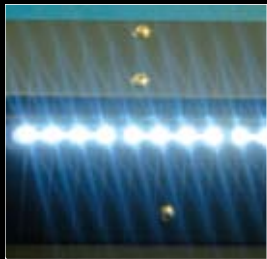


product data sheet

Low Rise Lifting Platform

Axess 2 Low Rise Lifting Platforms are the perfect solution to give easy access to homes, buildings and public premises where a change in level excludes the less able.

The Lifting Platform can be easily converted to a Steplift by adding an innovative bridging device which allows access for wheelchair users up to 4 steps (1 metre). The Lifting Platform is not only a cost effective quality solution, it is also supremely flexible.



open lifting platform



Low Rise Lifting Platform

LR800

Platform Size 1450 x 800mm
Footprint 1890 x 1004mm

LR900

1450 x 900mm
1890 x 1104mm

| | |
|--------------------------|-------------------------------------------------------------------|
| Safe Working Load | 300kg |
| Location | Internal and external |
| Access | through access |
| Fixing | Free standing |
| Travel Speed | 20mm/sec |
| Travelling Height | 1000mm |
| Gate | Single Interlocked Self-Closing Top Gate (available as an option) |
| Ramp | Power Driven Travelling Ramp/ wheelstop |

A range of options

A range of options are available for step bridging and call stations

Standards

BS 6440:1999 current British Standard for Lifting Platforms

The Machinery Directive 98/37/EC

All platform lifts must be tested in accordance with the European Directive and CE marked

Axess 2 Limited, Unit 7 Deanfield Drive,
Link 59 Business Park, Clitheroe, Lancashire. BB7 1QJ
Tel: 01200 405005 Fax: 01200 405006
Email: info@axess2.co.uk Web: www.axess2.co.uk

5 Year anti-corrosion warranty*

Platform sizes conforming to BS 6440 for both Domestic and Public Access

Durable, tolerant and reliable Steplift with or without Bridging options

A variety of finish and colour options

Internal or External use
Minimum Building Work

Single phase electrics

Simple installation

The Axess 2 policy is one of continuous product development and the Company therefore reserves the right to alter product or component specifications without notice.



*Terms & Conditions Apply